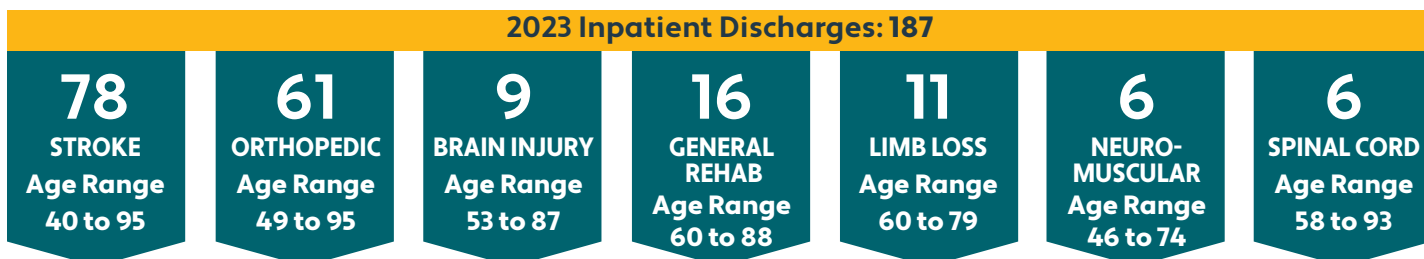


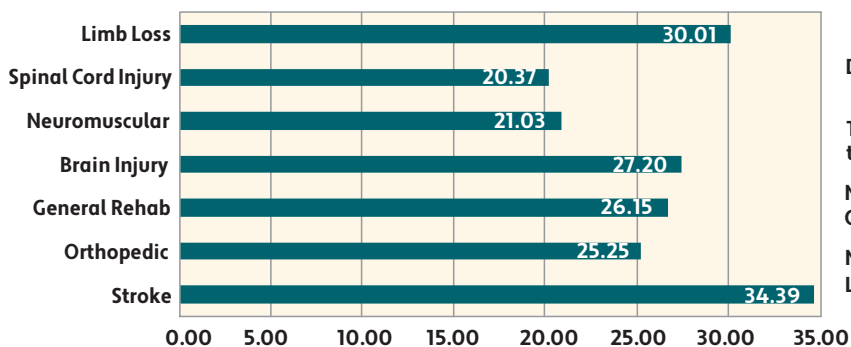
Memorial Hermann Rehabilitation

Memorial Hermann Southeast (MHSE), a member of the Memorial Hermann Rehabilitation Network, affiliated with TIRR Memorial Hermann, offers multidisciplinary inpatient medical rehabilitation. At MHSE, our patients come first. We provide care to patients recovering from injuries or suffering from chronic diseases that have impaired their physical or cognitive functioning. Our rehabilitation unit offers access to the most advanced, innovative rehabilitation services available, with a focus on personalized, patient-centered care.

Inpatients Served In 2023



Therapy Services

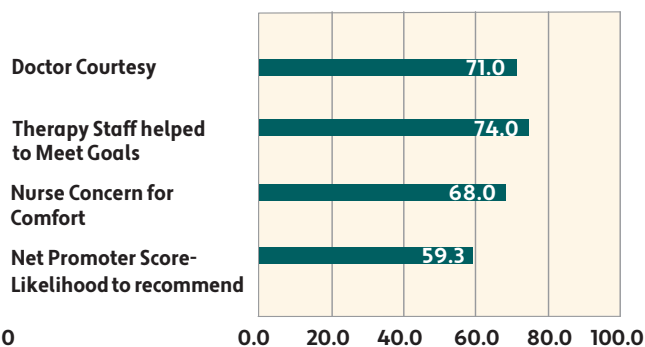


Individualized and group therapy
Shown in hours and minutes, per patient, per week
All patients

Along with individual and group therapy sessions, the hospital's weekend program also offers classes focused on family education, additional therapy needs; as well as, group and leisure activities, providing the necessary time and resources for our patients to achieve their discharge goals.

Data obtained from eRehabData for the reporting period of CY2023 and includes all discharge patients.

Patient Satisfaction



Overall satisfaction with the program
(Scale 0.00 - 4.00)

The Net Promoter Score provides a snapshot of our patients overall experience and how likely they are to recommend our facility.

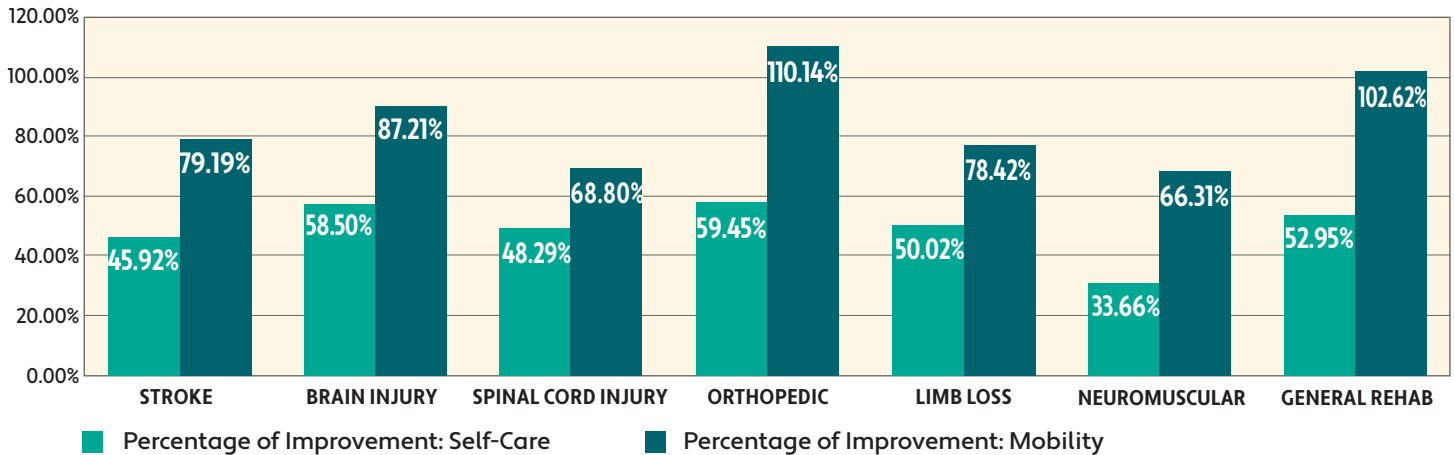
Data obtained from Qualtrics for the reporting period of CY2023.
(over)

The Memorial Hermann Southeast inpatient rehabilitation unit is designed to help patients reach optimal functionality following an injury or illness. Personal performance goals are incorporated into a customized rehabilitation treatment program. Team members at Memorial Hermann Southeast are among the best trained and most experienced rehabilitation professionals.

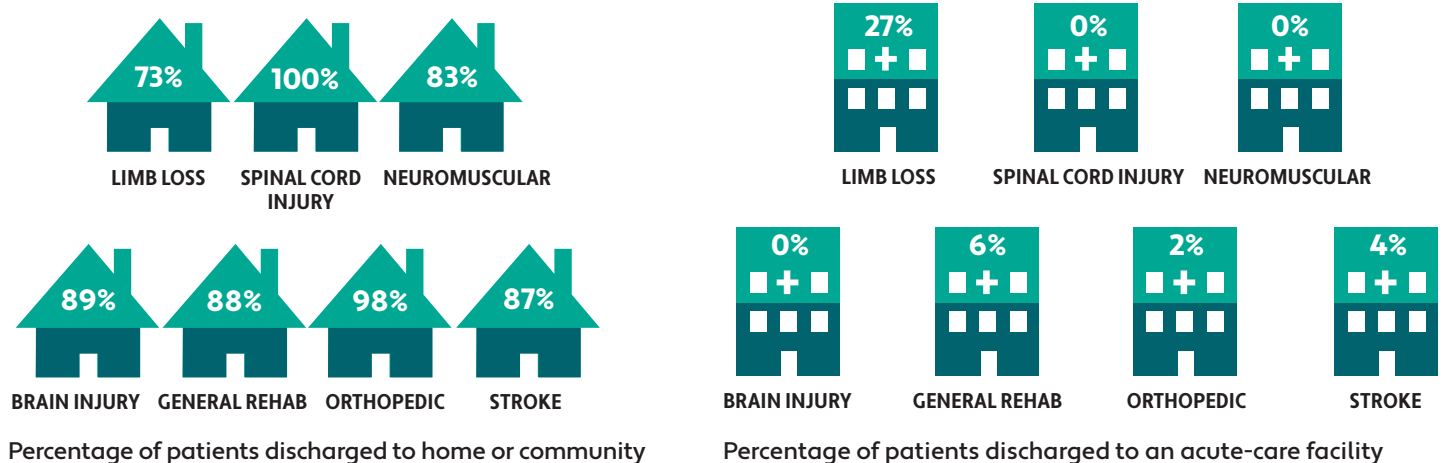
Rehabilitation Outcomes

The self-care and mobility outcome measures are used to assess the progress of a patient's functional skills such as dressing, bathing and eating. They are also used to measure the effectiveness of rehabilitation care delivered by the rehab team as well as, the effectiveness of the rehab program. This score is measured upon admission and right before discharge. The difference between the two scores represents the patient's functional gains achieved in response to an inpatient rehabilitation therapy program.

Functional Improvements from Admission to Discharge



Discharge Locations



Sometimes patients with medical complications have to return to an acute-care hospital for further medical care. When these transfers are not planned, they are defined as an unplanned acute-care admission.

Data from E-Rehab reporting for the reporting period of CY2022.



MEMORIAL HERMANN
Rehabilitation

11800 Astoria Blvd., Houston, TX 77089
1 (800) 44-REHAB (73422)

[memorialhermann.org / locations/inpatient-rehabilitation-southeast](http://memorialhermann.org/locations/inpatient-rehabilitation-southeast)